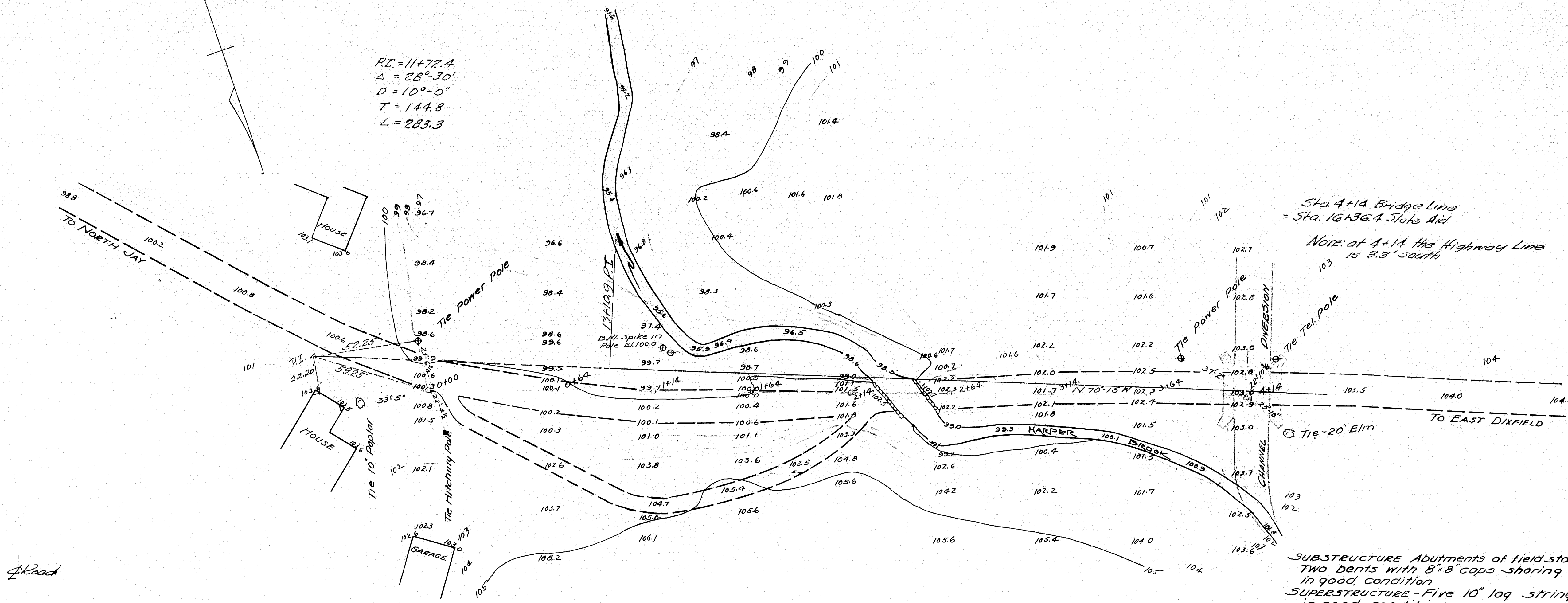
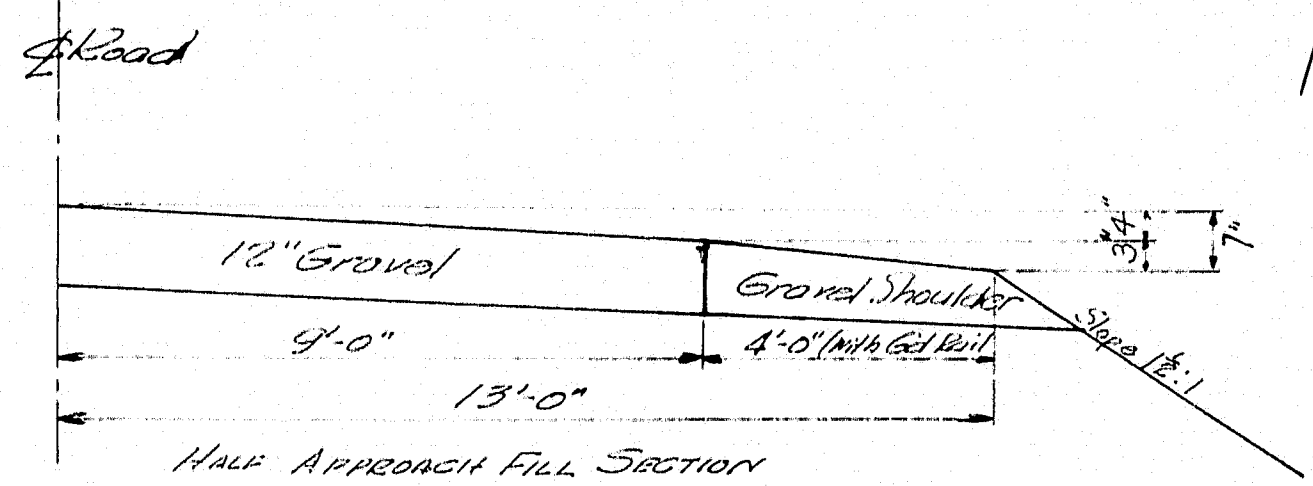


$RI = 11172.4$
 $\Delta = 28^{\circ}30'$
 $D = 10^{\circ}00'$
 $T = 144.8$
 $L = 283.3$

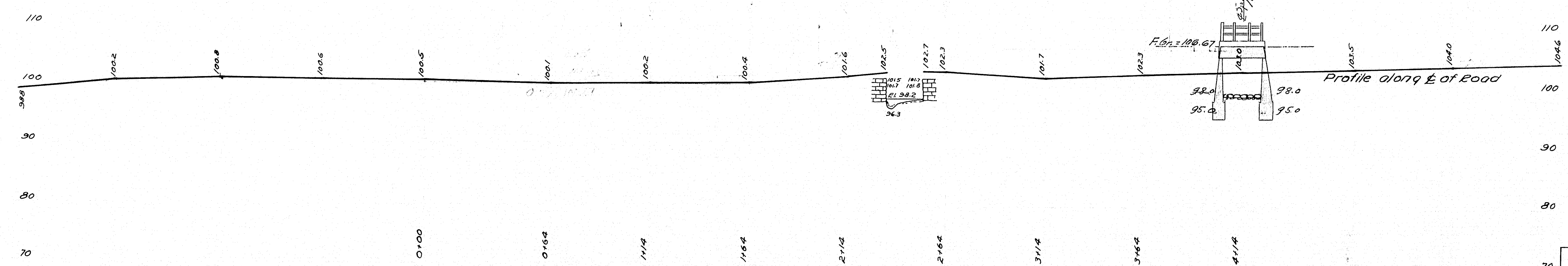


Sta. 4+14 Bridge Line
 = Sta. 10+36.4 State Rd.
 Note: at 4+14 the Highway Line
 is 3.3' south

SUBSTRUCTURE Abutments of field stone laid dry and in poor condition.
 Two bents with 8" x 8" caps shoring stringers at the third points. Bents
 in good condition.
 SUPERSTRUCTURE - Five 10" log stringers, fair, 3" transverse planking
 in good condition.
 FOUNDATION - Coarse gravel. Max. penetration 6" to 8"
 HIGH WATER About 1020



-PLAN-
 SCALE 1" = 30'



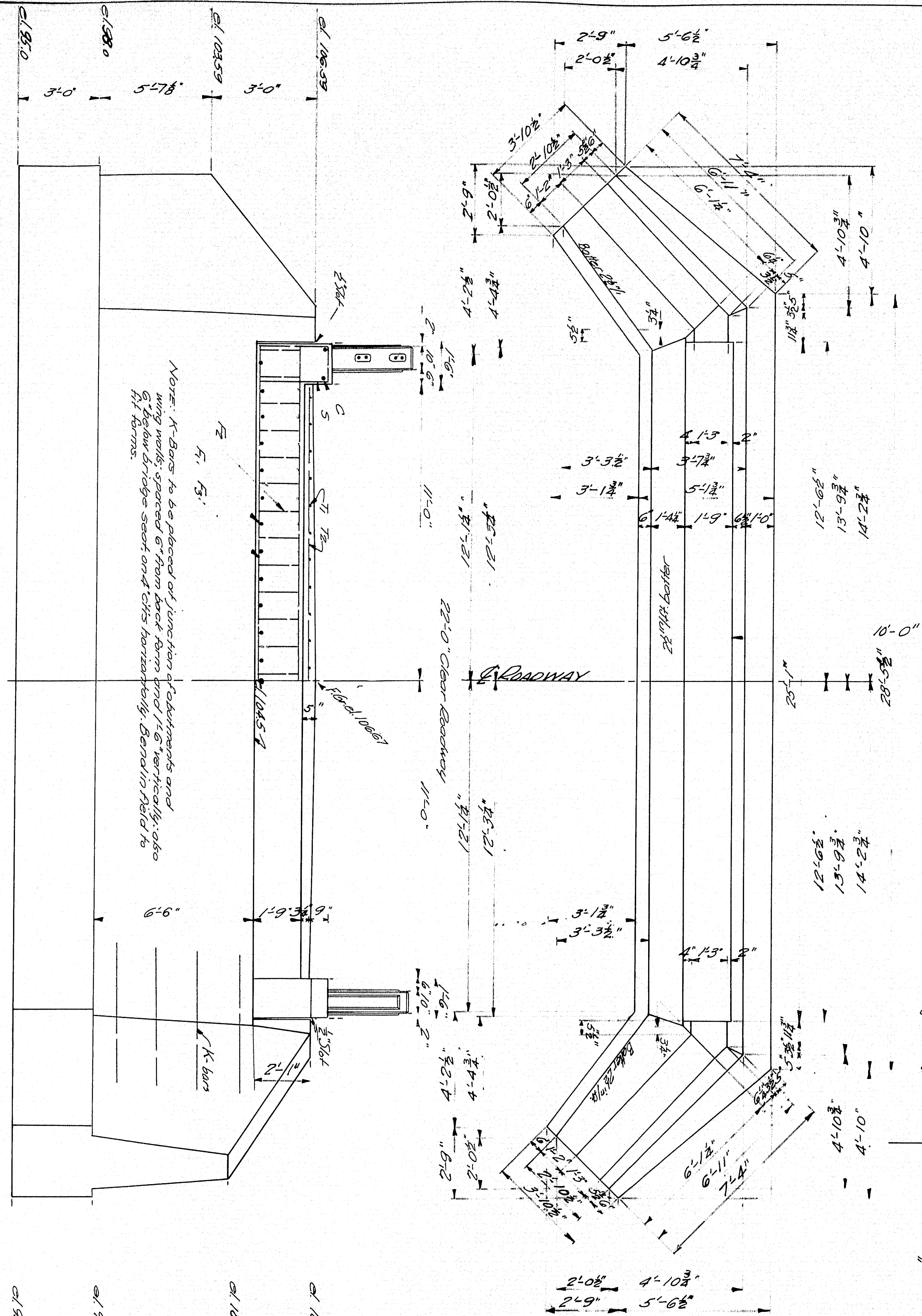
PROFILE
 Scales Hor 1" = 30' Vert 1" = 10'

Taylor
 Folkenson
 P. N.

TOWN NR 09-13
 BRIDGE NR 2341
 MAINE HIGHWAY COMMISSION
 BRIDGE DIVISION
 HALL OVER BRIDGE
 HARPER BROOK
 IN THE TOWN OF
 DIXFIELD-OXFORD-CO.
 WILTON-FRANKLIN-CO.
 SURVEY PLAN
 SHEET 1 of 2 AUGUSTA, ME FEB 10/1931

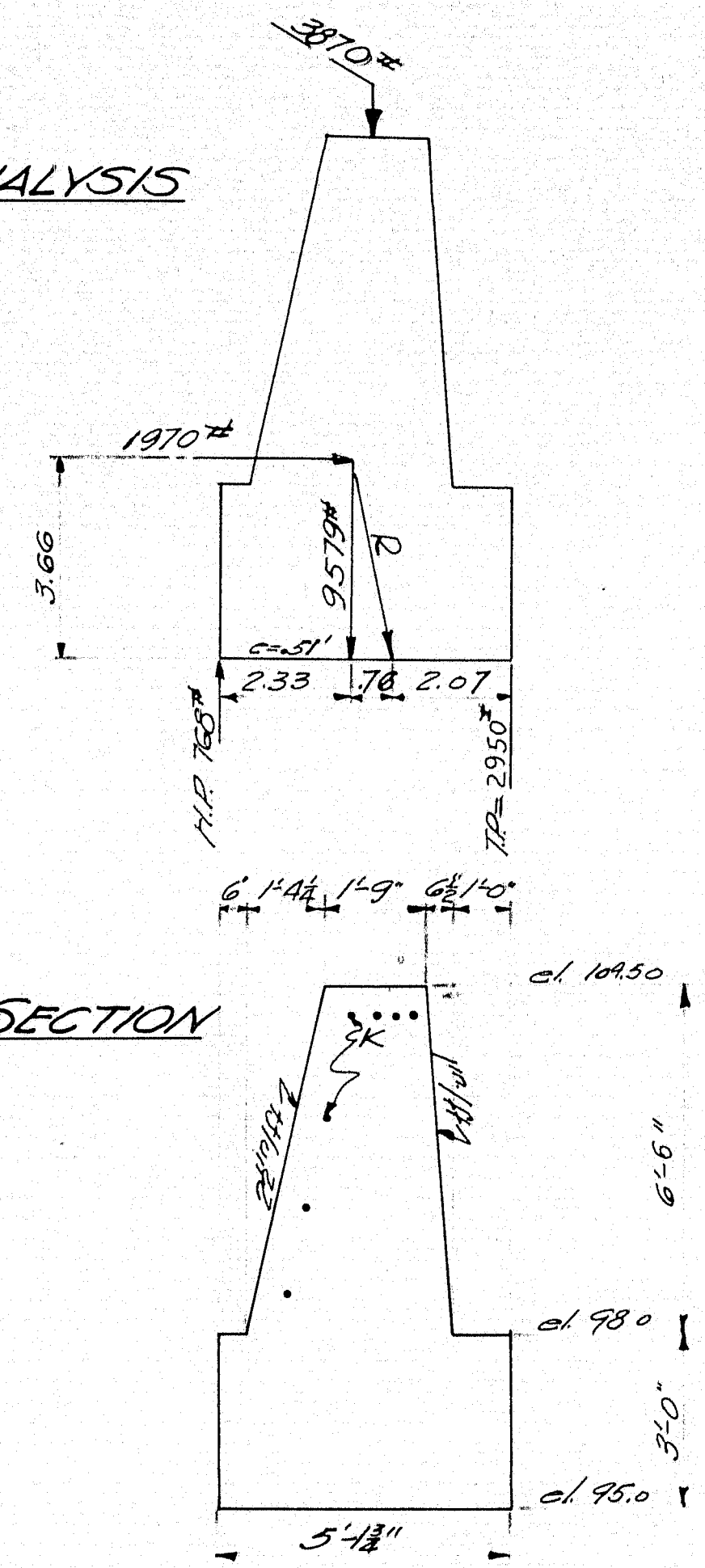
HALF SLAB SECTION HALF FRONT ELEVATION ABUTMENTS.

HALF REAR ELEVATION SLAB AND ABUTMENTS.

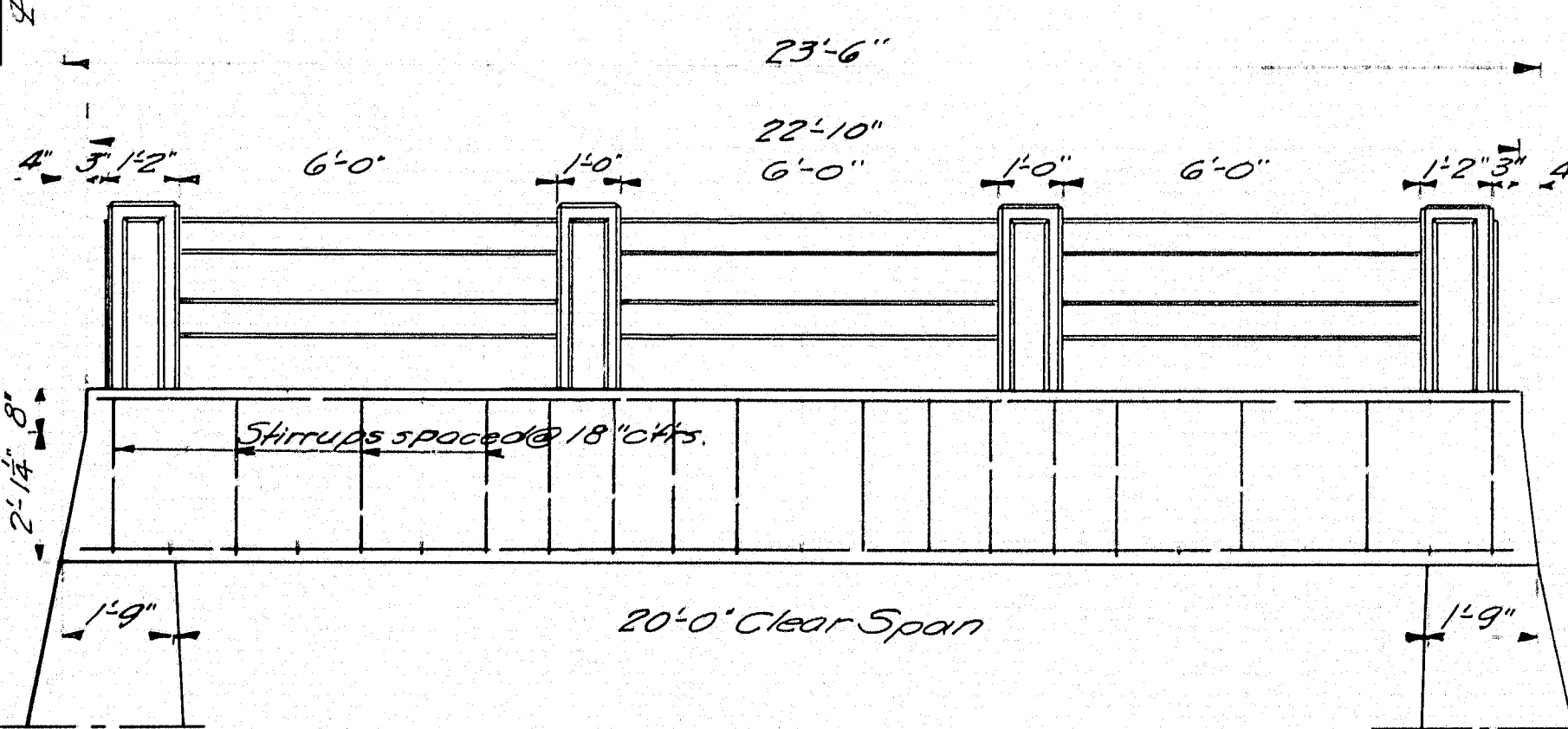


NOTE: Cover the slot between the slab and substructure on the backside with two layers of heavy roofing felt. Coat concrete and backside of each layer as applied with hot tar or asphalt. Felt to lap 5" on each side of slot. The area to be covered is to be recessed 1/4" by nailing thin strips to the forms.

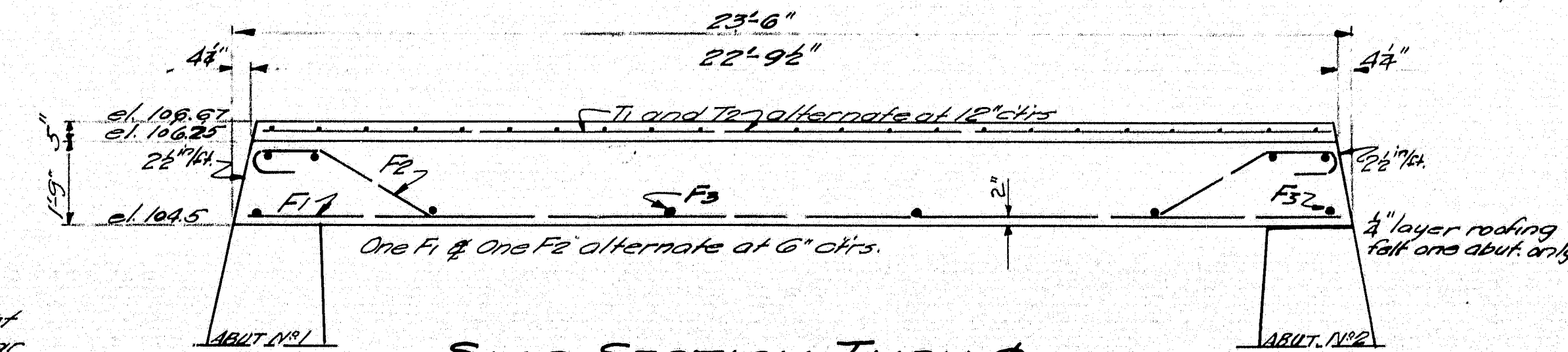
ABUT. ANALYSIS



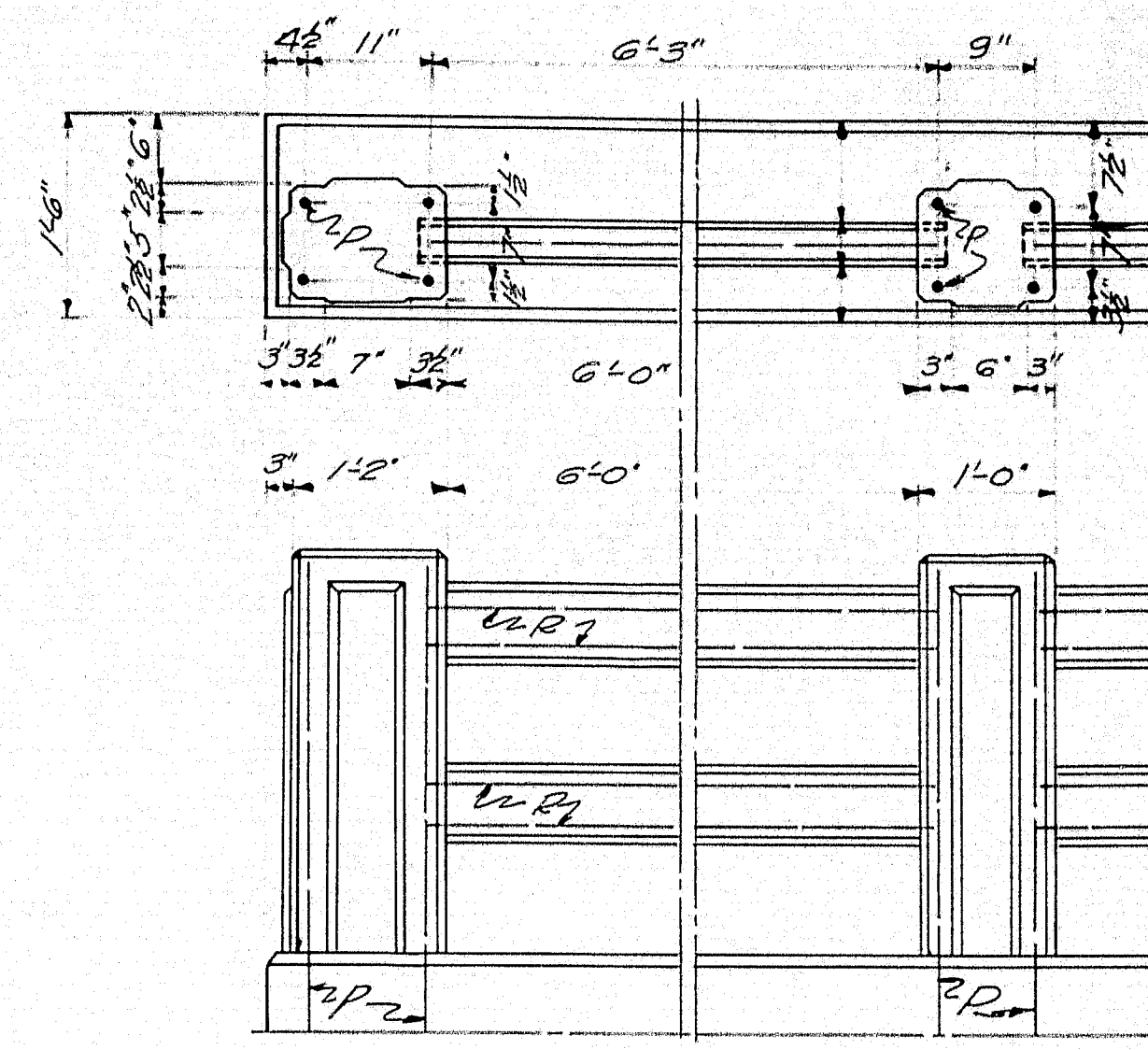
ABUT. SECTION



SIDE ELEVATION



SLAB SECTION THRU



RAIL DETAIL

Curb and slab to be cast together. Steel for posts to be set in curb. Precast rail bars in lengths of 6'-5". Place rail bars in position with ends projecting into post forms 2'-5". Wrap ends 6" with two thicknesses of light roofing felt. Fold in ends and when post forms are removed, cut away all felt exposed. Panels on posts to be 3" thick. Chamfer all exposed edges of concrete 1/4" unless otherwise indicated.

STEEL SCHEDULE

BENT BARS				
Mark	Size	No. Bars	Total Length	Location
F1	1" Ø	26	25'-3 1/2"	Slab
S	3/8" Ø	32	6'-3"	Curbs
STRAIGHT BARS				
Mark	Size	No. Bars	Total Length	Location
F1	1" Ø	25	23'-2"	Slab
F2	1/2" Ø	10	24'-8"	"
C	1/2" Ø	4	22'-7"	Curbs
T1	1/2" Ø	22	22'-6"	Wearing Surface
T2	"	23	21'-9"	"
K	3/8" Ø	28	8'-0"	Abut. Wings
P	3/8" Ø	32	4'-0"	Posts
R	3/8" Ø	24	6'-3"	Rail

All steel to be plain round bars of structural grade. Dimensions are to center lines of bars.

Dip-rap to be placed on stream bed between abutments.

MAINE HIGHWAY COMMISSION
BRIDGE DIVISION
HALL BRIDGE
OVER
HARPER BROOK
IN THE TOWNS OF
DIXFIELD - WILTON
OXFORD - FRANKLIN CO
Bridge Details
Sheet 2 of 2 Augusta, Me. Jan. 23, 1932